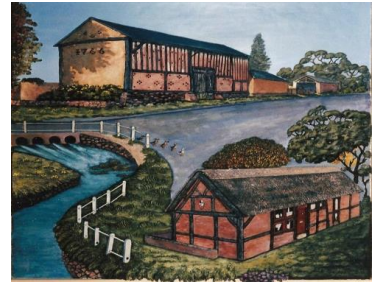


COSBY PARISH COUNCIL

CLERK: Mrs Elaine Wakelam
36 Wavertree Close
Cosby
Leicestershire
LE9 1TN



Telephone: 07802 303936
clerk@cosbyparishcouncil.org.uk

3rd January 2018

Re: Village Maintenance Contract April 2018 – March 2019

Cosby Parish Council is seeking quotations for the various works required as part of the Village Maintenance contract for the forthcoming year.

Under the terms of the Audit Regulations and the Council's Standing Orders, I am required to seek more than one tender for the contract.

I would be obliged to receive your reply by 31st January for consideration by the Council Members.

- a) **Mowing Cosby Churchyard**
Commencing April until the end of October to be cut twice a month
- b) **Mowing Victory Park**
Commencing April until the end of October to be cut twice a month
- c) **Mowing Pretty Corner**
Commencing April until the end of October to be cut twice a month
- d) **Mowing the Brook Banks**
 - 1) Patch Bridge to Ashtree Road
 - 2) Broughton Road (Chapel Lane to the Wash Pit)
 - 3) Main Street (Walnut Leys to The Nook)
 - 4) The NookCommencing April until the end of October to be cut twice a month
- e) **Children's Playground Area**
To be hand mown and edge trimmed to be cut twice a month

I would very much appreciate each aspect being costed individually so that we are able to make comparisons between various tenders received.

Should you be successful in gaining this contract, you will be required to supply a copy of your Public Liability Insurance prior to commencement.

Elaine Wakelam
Clerk to Cosby Parish Council.